

Green Bodhi

Eugene, OR 97440
greenbodhi@gmail.com
(541) 510-3861

Sample 1603OAS0060.0266

Strain: Golden Pineapple
Batch #: 0314GB2; Batch Size: 2700 grams
Ordered: 3/14/16; Sampled: 3/14/16; Completed: 3/17/16; Expires: 7/15/16
Sample collection: Random; Environment: Room Temperature

Golden Pineapple

Plant, Flower - Cured, Indoor



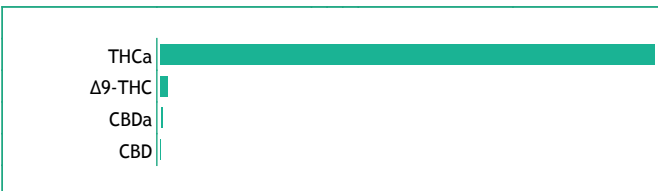
Cannabinoids

24.1%
Total THC*

0.1%
Total CBD**

24.1%
Total Cannabinoids

NA
Moisture



Safety

Pass
Pesticides

Not Tested
Microbials

Cannabinoid	Mass %	Mass mg/g	LOQ %	Spike %
THCa	27.0%	270	0.02%	
Δ9-THC	0.4%	4	0.02%	
CBDa	0.1%	1.0	0.02%	
CBD	<LOQ	0.0	0.02%	
Total THC*	24.1%	241.0		
Total CBD**	0.1%	1.0		
Total Cannabinoids Analyzed	24.1%	275.0		

Method: Performed by partner lab, CannAnalytical Research
Based on dry weight
LOQ = Limit of Quantification; NA = Not Analyzed
*Total THC = THCa * 0.877 + Δ9-THC
**Total CBD = CBDa * 0.877 + CBD

Pesticide Method: Agilent 6890/5973 GC/MS; LOQ = Limit of Quantification; PPM = Parts Per Million; PPB = Parts Per Billion; ND = Not Detected; NA = Not Analyzed

Microbial Method: 3M Petrifilm; Based on wet weight; CFU = Colony Forming Unit; TNC = Too Numerous to Count; NA = Not Analyzed

Other Notes:

1686 Pearl St.
Eugene, OR 97401



(541) -636--7240
www.oregonanalyticalservices.com

Matthew Hoffman

Matthew Hoffman
Interim Lab Director

Confident Cannabis
All rights reserved
(866) 506-5866



www.confidentcannabis.com

This product has been tested by Oregon Analytical Services using valid testing methodologies and a quality system as required in OAR 333-008-1190 and OAR 333-008-9000. Values reported relate only to the product tested. Oregon Analytical Services makes no claims as to the consumer safety or other risks associated with any detected or non-detected levels of any residual solvents. This Certificate shall not be reproduced except in full, without the written approval of Oregon Analytical Services.

Green Bodhi

Eugene, OR 97440
greenbodhi@gmail.com
(541) 510-3861

Sample 1603OAS0060.0266

Strain: Golden Pineapple
Batch #: 0314GB2; Batch Size: 2700 grams
Ordered: 3/14/16; Sampled: 3/14/16; Completed: 3/17/16; Expires: 7/15/16
Sample collection: Random; Environment: Room Temperature

Golden Pineapple

Plant, Flower - Cured, Indoor



Pesticides

Compound	Sample	Limit	LOQ	QC Spike
	PPM/Status	PPM	PPM	%
Carbamates				
Carbaryl	ND/Pass	0.1	0.045	0%
Pyrethroids				
Bifenthrin	ND/Pass	0.1	0.100	1%
cis-Permethrin	ND/Pass	0.1	0.045	1%
trans-Permethrin	ND/Pass	0.1	0.045	0%
Organophosphates				
Chlorpyrifos	ND/Pass	0.1	0.045	1%
Diazinon	ND/Pass	0.1	0.045	1%
Dichlorvos (DDVP)	ND/Pass	0.1	0.045	0%
Dimethoate	ND/Pass	0.1	0.045	0%
Fenthion	ND/Pass	0.1	0.045	1%
Malathion	ND/Pass	0.1	0.045	1%
Mevinphos	ND/Pass	0.1	1.500	1%
Phosalone	ND/Pass	0.1	1.500	0%

Compound	Sample	Limit	LOQ	QC Spike
	PPM/Status	PPM	PPM	%
Chlorinated Hydricarbon				
2-Phenylphenol	ND/Pass	0.1	0.045	1%
4,4-DDT	ND/Pass	0.1	0.045	1%
Dicofol (Kelthane)	ND/Pass	0.1	0.045	1%
Endosulfan sulfate	ND/Pass	0.1	0.045	0%
Endrin	ND/Pass	0.1	0.045	1%
gamma-BHC (Lindane)	ND/Pass	0.1	0.045	0%
Others				
Chlorothalonil	ND	NA	0.150	0%
Cyprodinil	ND	NA	0.045	1%
Dichlofluanid	ND	NA	1.500	1%
Fenhexamid	ND	NA	0.045	1%
Metalaxyl	ND	NA	0.045	1%
Myclobutanil	ND	NA	0.045	1%
Propargite	ND	NA	0.150	0%
Vinclozen	ND	NA	0.150	0%

Method: Agilent 6890/5973 GC/MS; LOQ = Limit of Quantification; PPM = Parts Per Million; PPB = Parts Per Billion; ND = Not Detected; NA = Not Analyzed; 3/16/16

Pass

Pesticides

